

AAVLD

November &  
December

# NEWSLETTER

[Visit our Website](#)

## Presidents Message



As we move toward the end of 2024, I am thankful to be able to serve this amazing organization in the role of President. AAVLD has been my professional home for many years, and it has been a fulfilling journey to be able to learn first-hand about all the worthwhile things all of you do for animal health. While the rest of the country approaches this season as an opportunity to slow down and take a breather, many of us are in the middle of the devastating H5N1 outbreak and will continue to support the affected industries in the days ahead. I have been

[Award Opportunities](#)

[Major Organizational Awards](#)

[Meeting Photos](#)

[Committee Dashboard](#)

[Membership Renewal](#)

[2024 Awardee List](#)

so impressed by the way our colleagues look out for each other and support each other when help is needed. Our work is meaningful, and our clients and stakeholders rely on us to provide accurate and timely diagnoses. The New Year will bring a host of exciting new opportunities for workforce development through our partnerships with NVSL and the Center for Public and Corporate Veterinary Medicine. The

Accreditation Committee is working hard on its initiative to become an accredited accrediting body.

Members of the Executive Committee have been supporting efforts to approve national H5N1 milk surveillance and early detection through bulk tank testing. Additionally, the Government Relations Committee and Lab Directors, are urging Congress to pass a new Farm Bill and increase funding for the NAHLN.

New challenges and opportunities lie ahead, but with the support of our fantastic membership, and our Executive Board team, I do not doubt that we can tackle anything we are faced with. I hope that you all get a chance to spend time with family and friends over the holiday season and know that we are grateful for all of you. Happy Holidays!

Tanya LeRoith, DVM, PhD, DACVP

**News Editor:**

Dave Zeman

[dzeman@aavld.org](mailto:dzeman@aavld.org)

**Produced by:**

Reda Ozuna

[rozuna@aavld.org](mailto:rozuna@aavld.org)

---

## Outgoing President's Message



Wow, what a year! Looking back at the last 12 months, I appreciate all my experiences and time as the AAVLD President. Our organization has been busy with modernization and growth while managing a few foreign animal diseases and a global pandemic. The veterinary profession continues to adapt and evolve quickly, and I am sure we all are excited to stay at the leading edge of change. It is strange how relatively easy change can happen during an emergency compared to the “peacetime” of infectious disease epidemics. Sometimes, change can be a 5-letter word in our laboratories when we are not trying to figure out how to staff 24/7 for permitted movement testing.

Our members are the key to making AAVLD a great organization rather than just a good organization. We have a fantastic group of driven, like-minded individuals who work well together to achieve remarkable goals, especially considering our resources. Every year, I look forward to life slowing down just a bit, but then the next “big thing” comes around, and I find myself saying the same thing 12 months later.

Thank you all for making AAVLD what it is today and what it will grow to be tomorrow. Special thanks to Dr. Dave Zeman, Reda Ozuna, and Kaylin Taylor. You are all indispensable, and we need 2 more of each of you! I look forward to continuing to work with the board and wish Dr. LeRoith the best as our new president.

Happy Holidays,  
Keith Poulsen  
Past-President, AAVLD

2024  
AAVLD  
E.P. Pope

Awarded to  
Kristy Pabilonia

Congratulations for a job  
well done!

[Full major award article](#)



Kristy Pabilonia, DVM, PhD,  
**AAVLD Secretary-Treasurer**

The E. P. Pope Award is AAVLD's highest recognition for significant contributions to the organization and the field of Veterinary Diagnostic Laboratory Medicine.

2024 AAVLD  
Distinguished  
Service Award

Awarded to  
Bruce Akey

Congratulations for a job well  
done!

[Full major award article](#)





**Bruce Akey, BS, MS, DVM**

The AAVLD Distinguished Service Award recognizes a member who has generously volunteered their time, energy, and professionalism to substantially enrich and advance the organization.

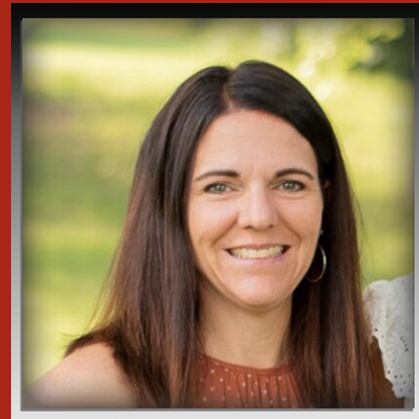
## President's Award



**Hemant Kashinath Naikare,  
VSc &AH, MVSc, PhD, Diplomat ACVM, MBA**

This award recognizes an individual(s) who has demonstrated meritorious achievement or contribution by undertaking special initiatives that advance the mission, values, recognition, and reputation of the organization.

## AAVLD Outstanding Performance Award for Diagnostic Services



**Kristin Zuzek, BS Biology, MS Biology**

The AAVLD Outstanding Performance Award for Diagnostic Services honors a member of an AAVLD laboratory that has performed their duties on behalf of their clients in an outstanding fashion. This may be at the bench conducting diagnostic tests, or by performing a variety of essential laboratory management services such as clerical, fiscal, physical facility, or quality system work.

## AAVLD Life Membership

In recognition of longevity as an active contributing member of the AAVLD.



*Full major award article...*

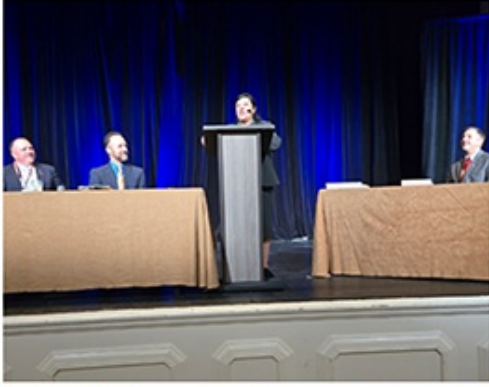


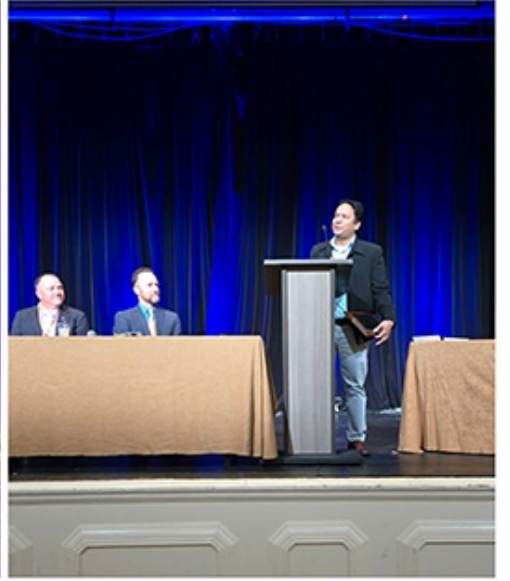
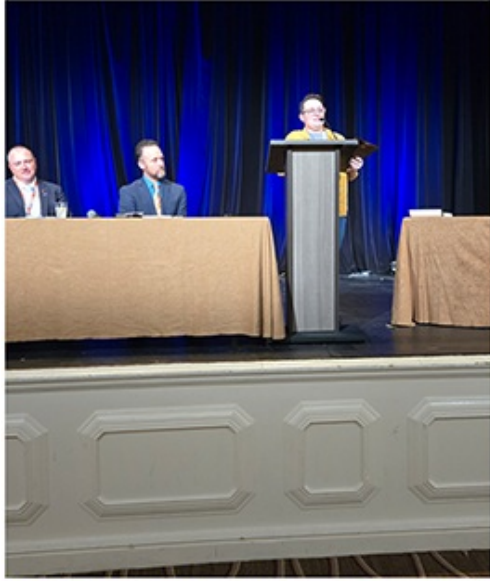
**Jeff Hayes, DVM MS**

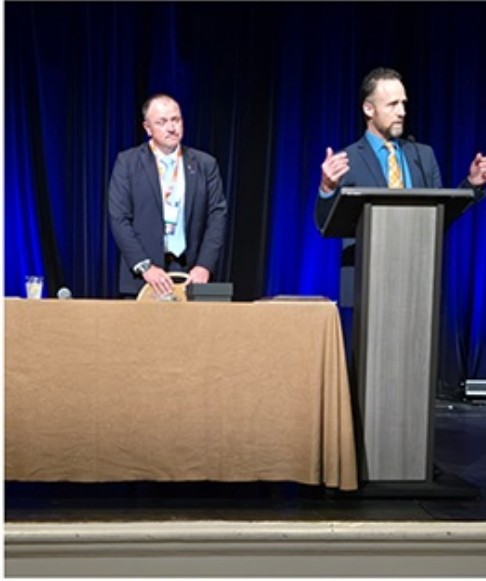
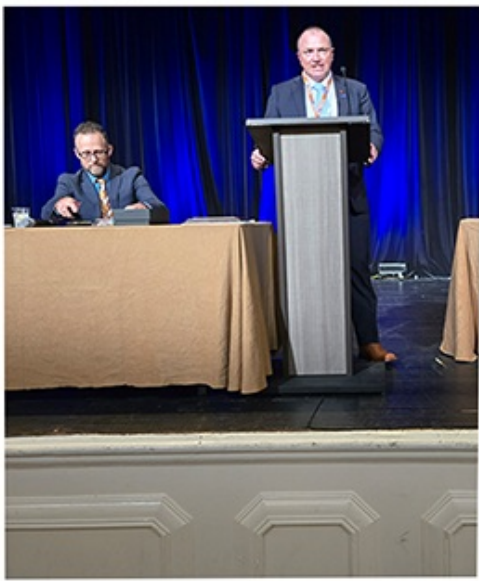


*2022 DVM 67th Annual Meeting*

# 2024 Annual Meeting







[Full annual meeting photos](#)

**T**hank you to all who submitted scientific abstracts to the 2024 annual meeting. A total of 228 were accepted and published in the Annual Meeting Proceedings, available digitally to all members on our website. The travel awardees are listed below:

## 2024 Trainee Travel Awardees

1. MaRyka Smith, Kansas State University
2. Hayley Masterson, Washington State University
3. Brooklyn Cauwels, Iowa State University
4. Aurelle Yondo, Georgia State University
5. Sai Narayanan, Oklahoma State University
6. Hayley Masterson, Washington State University
7. Berenice Munguia-Ramirez, Iowa State University
8. Sydney Epley, Kentucky State University
9. Calvin ChengYu Ko, Iowa State University  
(*Bacteriology Committee / AAVLD Foundation sponsors*)
10. Catie Burgess, Virginia Tech (*Epidemiology Committee / AAVLD Foundation sponsors*)
11. Agustin Rebollada-Merino, Cornell University  
(*Pathology Committee / AAVLD Foundation sponsors*)

Congratulations!

Tanya LeRoith, DVM, PhD, DACVP  
AAVLD 2024 Program Chair


[Full 2024 Awardee list](#)





Current job postings are available.

[\[READ MORE\]](#)



Improve your resume with a free review

Upload Resume



# LABS STEPPING UP

## AAVLD Labs in the News



**Happy Holidays**  
from your AAVLD Staff!

# from your AAVLD Staff!

However you may celebrate the Holidays, your AAVLD Staff wishes you and yours peace and rest during the Holiday Season. We also wish you a prosperous and productive year ahead. Thank you for all you do to promote animal health and human health. Your efforts also ensures our nation's food supply. Thank you for being engaged members of AAVLD and serving the mission of our organization.  
Your AAVLD Team,

Reda Ozuna, Holly Farrell, Pat Lukens, Kaylin Taylor,  
Grant Maxie, David Zeman



WASHINGTON STATE  
UNIVERSITY

## WSU pathologists identify plague in blind Idaho deer

By Devin Rokyta, College of Veterinary Medicine





A young mule deer in the shade at the orchard of Fruita, Capitol Reef National Park, Utah, Southwest USA (photo by Pedro Carrilho on iStock).

PULLMAN, Wash. — Washington State University pathologists have confirmed a rare case of plague in a mule deer found blind and emaciated in Idaho.

Caused by the bacterium, *Yersinia pestis*, plague occurs naturally in areas of the western United States and circulates among wild rodents and other animals. There have been five previously documented cases of plague in deer, none of which was in Idaho. The disease most commonly manifests with lesions in the deer's eyes and results in blindness, a condition that has been labeled as ocular plague.

In humans, exposure to plague can lead to severe illness and death without early antibiotic treatment. Wildlife officials recommend hunters and other people avoid contact with any animal that is blind or exhibiting abnormal behavior and record the exact location and species of the animal and report it to their state wildlife agency.

"Deer and other ruminants don't appear to be particularly susceptible to plague, but in the few published cases, it has specifically been found in the eyes," said Dr. Elis Fisk, a pathology resident at the Washington Animal Disease Diagnostic Laboratory in the WSU College of Veterinary Medicine. "The disease doesn't necessarily kill the deer on its own, but it causes blindness, likely making them vulnerable to predators and significantly reducing their chances of survival."

The deer was spotted and reported by a member of the public on June 9 in Custer County. An Idaho Department of Fish and Game officer located and euthanized the animal the following day. Tissue samples and the deer's eyes were submitted to WADDL for testing.

In humans, exposure to plague can lead to severe illness and death without early antibiotic treatment. Wildlife officials recommend avoiding contact with any animal that is blind or exhibiting abnormal behavior.

"When we received the samples, the eyes appeared highly abnormal," Fisk said. "Usually, when you cut into the eye, it contains clear fluid, but in this case, it was filled with thick, reddish-brown debris. The other interesting thing was the retina was detached, and there was significant inflammation and necrosis."

Although plague is extremely rare, Dr. Kyle Taylor, a pathologist at WADDL and faculty member in the College of Veterinary Medicine, was aware of previous cases in Wyoming and Oregon and noted similarities.

"It isn't the first thing to jump to because there's plenty of other bacteria it could have been," Taylor said. "But it seemed prudent to test for plague to rule it out, especially since the samples could still have contained live bacteria, posing a safety risk to anyone handling them. The chances were small since proper safety protocols were followed, but it's not something you want to overlook because plague is a potentially fatal disease, yet treatable if caught early."

A polymerase chain reaction test, a laboratory technique used to detect small amounts of DNA, confirmed the suspicion.

Plague was only detected in the deer's eye samples and not in its organs or other tissues. While the exact reason for this remains unclear, Fisk and Taylor speculate that by the time the samples were collected and examined, the bacteria may have already cleared from other tissues, leaving only the eye damage behind.

Determining the prevalence of ocular plague in deer is challenging because infected animals will likely fall prey to predators or die naturally before humans encounter them.

"It's probably just a super rare finding that anyone came across this animal before it died in the wild," Taylor said.

Because plague is a regulated pathogen, WSU was required to report the case to the Centers for Disease Control and Prevention. All samples were also destroyed after testing for safety reasons.

[Full article](#)

---

# In Memory

## Dr. Shankar Mondal

From the University of Maryland College Park's College of Agriculture and Natural Resources, where Dr. Mondal served as an Adjunct Clinical Associate Professor:



Dr. Mondal was the Laboratory Director and Avian Pathologist at the Salisbury Animal Health Laboratory of the Maryland Department of Agriculture (MDA), where he provided poultry diagnostic and consulting services for MDA and poultry producers, including the large Delmarva broiler industry. Prior to his arrival to MDA in 2018, he worked as poultry veterinarian for a pasture-raised organic layer company based in New York. Dr. Mondal had a strong background in research and diagnosis of infectious diseases of poultry and collaboration with the poultry industry. After coming to the USA in 1998, he joined the Cornell University College of Veterinary Medicine where he initiated his research on avian infectious bronchitis virus (IBV) and worked with extension and poultry diagnostic services. Dr. Mondal had a wealth of experience through post-doctoral works with molecular biology aspects of IBV, Marek's disease virus, avian poxvirus, avian influenza virus, and reverse-genetic systems of equine arteritis virus. He had been an instructor in avian diseases diagnostics and production medicine at Cornell University and University of California at Davis. Dr. Mondal served as Country Team Leader of USAID/STOP AI (Avian Influenza)

Bangladesh project (2009-10) and as International Consultant for Food and Agriculture Organization (FAO) of the United Nations in Bangladesh (2011-12). He is the author or co-author of 17 peer-reviewed research papers, and has been active in presenting his research findings at national and international meetings.

Dr. Mondal received his PhD in Comparative Pathology in 2005 from the University of California at Davis School of Veterinary Medicine. He has a DVM degree and an MS in Microbiology from Bangladesh Agricultural University. Dr. Mondal has been a Diplomate of the American College of Poultry Veterinarians since 2008.

---

### Bring on the news!

AAVLD Membership, please send your laboratory news to Dave Zeman, Executive Director [dzeman@aavld.org](mailto:dzeman@aavld.org)



---

## Committee Document Submissions

Committee documents all in one place.

Thank you, Committee Chairs for joining the AAVLD Zoom meeting.

Please use the provided link within this PDF Portfolio to access:

- Committee Chair reporting instructions and URL links to electronic forms
- A letter from the AAVLD meeting coordinator Kaylin, Taylor
- AAVLD Committee SOP

## '2024 AAVLD COMMITTEE CHAIR PACKAGE'

Please download the PDF Portfolio to your computer->Save->Open PDF saved on your computer-> There are three documents enclosed.

## JVDI in Focus

### Comparison of fluorescent antibody test, immunohistochemistry, and PCR testing for diagnostic confirmation of neurolisterosis in 25 goats, Rissi et al.

**Abstract.** Neurolisterosis, a common disease of small ruminants, is most often caused by *Listeria monocytogenes*. Here we describe 25 cases of caprine neurolisterosis diagnosed in our laboratory over a 5-y period and compare our fluorescent antibody test (FAT) results with immunohistochemistry (IHC) and polymerase chain reaction (PCR) testing for diagnostic confirmation. Neurohistologic changes consistent with neurolisterosis affected the pons in all cases, extending rostrally to the mesencephalon in 6 cases, caudally to the medulla oblongata in 6 cases, and/or dorsally to the cerebellum in 4 cases. Acute inflammatory changes were observed in 17 cases, and included neuroparenchymal microabscesses, neuronal necrosis and neuronophagia, axonal swelling, microgliosis and astrogliosis, and perivascular neutrophils with macrophages, lymphocytes, and plasma cells that occasionally extended to the leptomeninges. [More](#)



November 2024

[Click here for November issue](#)

### Email Alerts

Sign up to receive email alerts:

- With the latest table of contents
- When new articles are published online

### Stay Connected:



The *Journal of Veterinary Diagnostic Investigation* is the official journal of the [American Association of Veterinary Laboratory Diagnosticians](#). The mission of the Journal is to educate by informing readers of progress in veterinary laboratory medicine and related fields of endeavor. The key objectives of the JVDI are to promote the science of veterinary laboratory medicine and the betterment of animal and public health. JVDI fully supports diversity, equity, and inclusion in our publishing activities.

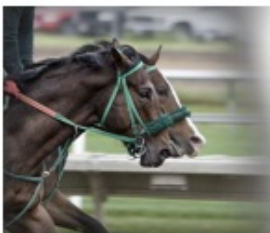
Editor-in-chief, Dr. Grant Maxie / <https://journals.sagepub.com/home/JVDI>

# JVDI

Journal of  
Veterinary  
Diagnostic  
Investigation



The Official Journal of  
American Association of Veterinary Laboratory Diagnosticians



## JVDI Call for Submissions

please submit an abstract of up to 250  
words describing your proposed topic by March 1, 2025

### "Special issue on racehorse diseases, injuries, welfare, and safety"

Racehorse welfare and safety is a vital component of the racing industry, with ever-increasing scrutiny and expectations from both the general public and the racing community. Since 2009, catastrophic musculoskeletal injuries sustained during Thoroughbred racing have decreased by over 40%, with continued room for improvement. The postmortem examination provides invaluable information not only in cases of catastrophic musculoskeletal injury, but in the event of exercise-associated sudden death, or deaths due to medical causes.

We are inviting submissions to a JVDI special issue on racehorse diseases, injuries, welfare, and safety to be guest edited by Dr. Laura Kennedy, University of Kentucky; Dr. Francisco Uzal, University of California–Davis; Dr. Julie Engiles, University of Pennsylvania; and Dr. Sue Stover, University of California–Davis.

If you are interested, **please submit an abstract of up to 250 words describing your proposed topic by March 1, 2025.** Full research papers, case series, brief reports, and reviews of a focused topic will be considered, as will single-animal case reports if they are novel and include a review of the literature on the focused topic of the report. For abstracts on topics considered suitable for the special issue, authors will be notified by March 15, 2025, and full submissions will be expected by September 1, 2025. Submitted manuscripts will proceed through the usual JVDI peer-review and editorial process, with publication expected in the winter of 2025–2026. Page charges of \$75/printed page will apply —there is no color page charge for online-only publications.

Please submit your abstract to guest editor Dr. Laura Kennedy,

[drlaurkennedy@uky.edu](mailto:drlaurkennedy@uky.edu)



  **SAVE THE DATE**  

**International Symposium of the World  
Association of Veterinary Laboratory Diagnosticians**

**JUNE 12 - 14, 2025  
Calgary TELUS Convention Centre**

The Organizing Committee is excited to welcome you to ISWAVLD 2025 held in the wonderful city of Calgary, Canada! Be sure to visit the conference website for more information!

# Worth Quoting

The important thing is to never stop questioning

~Albert Einstein

Christmas waves a magic wand over this world, and behold, everything is softer and more beautiful.

~Norman Vincent Peale



---

## Join AAVLD Committees



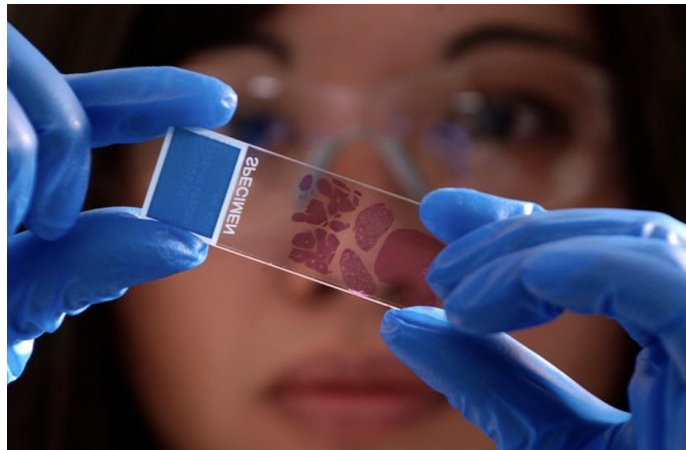
Are you Interested?  
**Join now!**

### Functions of AAVLD Committees

Committees serve multiple functions that are essential to the AAVLD mission. This includes dissemination of the latest scientific information that will advance the many disciplines engaged with diagnostic medicine, including:

AAVLD Committee enrollment [form](#)

[Click here for full article:](#)



### 2023 Pathology Slide Set for sale

Slide sets are \$60.00 including shipping/handling within the US. If international, please supply your FedEx/UPS account number.

[2023 Pathology Slide Seminar slide sets](#)

[Read More](#)





# AAVLD / USAHA ANNUAL MEETING



October 30 to November , 2025  
Gaylord Opryland Resort & Convention Center  
Aurora, Colorado

Program

Annual Meeting  
Proceedings

Foundation Auction

Exhibitor & Sponsors

Award Opportunities

## 2024 Annual Meeting Gallery

[View more pictures...](#)



## AAVLD MC | LMS

Certification  
&  
Training Materials



**The 2024 Annual Meeting Proceedings book is available to all members:**

Go to the AAVLD Recourse menu and select CE Resources and Archive submenu.

[Take a look](#)

- Annual Meeting Proceedings
- View all abstracts and Posters
- View notes from Plenary Sessions
- See student Testimonials

[Click here for full article:](#)

## Take advantage of the terrific AAVLD resources offered to our members



### Veterinary Jobs - American Association of Veterinary...

[Read More](#)

### Veterinary Jobs - American Association of Veterinary...

The American Association of Veterinary Laboratory Diagnosticians offers the top jobs available in Veterinary diagnostic labs. Search and apply to open positions or post jobs on the American Association of Veterinary Laboratory Diagnosticians now.

Contact: [rozuna@aavld.org](mailto:rozuna@aavld.org)

[Readmoreaavld-jobs.careerwebsite.com](http://Readmoreaavld-jobs.careerwebsite.com)

---

## 2025 Renewals are due by November 15! 'Membership is January to December'

AAVLD membership is open to any individual interested in the disciplines and activities of veterinary diagnostic laboratories. Membership terms are by calendar year (January-December) and membership dues are payable by November 15th of the preceding year (to ensure inclusion in the annual membership directory, eligibility for committee involvement, and receipt of all six issues of the JVDI). Note: In order to receive a discounted rate for the Annual Meeting registration, you are required to be a current AAVLD Member.

### Did your membership Lapse?

Please select 'Renew Now' to access the Lapsed Membership renewal form. [www.aavld.org](http://www.aavld.org) ->Quick Links->Renew Now->here you can access the Lapsed Membership Form.

## AAVLD & News Worthy Events

2024 Student Travel and  
Student Competitive Awardees  
[click here](#)

### Up and Coming!

**2025 Accreditation Committee Meeting/Audit Pool Training**

Monday, February 3-5, 2025

**2025 Executive Board Committee Meeting**

Thursday, February 6, 2025

**AAVLD/USAHA Annual Meeting in Denver**

October 30-November 5, 2025



Do you have ideas to improve the AAVLD annual meeting?  
Contact David Zeman [dzeman@aaavld.org](mailto:dzeman@aaavld.org)

Would you like to sponsor an event? Contact  
Kaylin Taylor [kaylin@taylormadeeventco.com](mailto:kaylin@taylormadeeventco.com)

Would like to make a year-end donation to the AAVLD  
Foundation? [Make your donation today!](#)

**What ever your contribution to the AAVLD mission, we  
need you!**

[AAVLD Meeting Calendar](#)



[AAVLD Events page](#)

THANK YOU TO OUR AFFILIATED INDUSTRY SUSTAINING  
MEMBERS

**BIO MED**  
DIAGNOSTICS





## Experience highly selective prepared media culture...

Highly selective pre-poured media culture devices, engineered for specimen transport, isolation, identification, and differentiation.

[Read More](#)



## Contact Us | Longhorn Vaccines & Diagnostics

Longhorn is in close communication with the FEMA/HHS about supply capacity expansion. We are working with buyers to optimize tube selection to match available swabs and to fit into existing automation systems. 2 Bethesda Metro Center Suite...

[Read More](#)

## 2024 AAVLD Partners Thank you for your sponsorships!



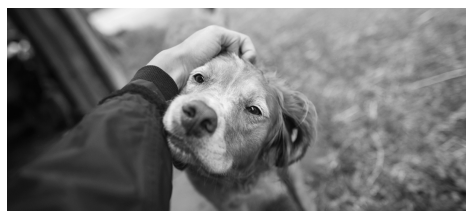
### Advanced Technology Corp.

Veterinary Practice Management Software, Laboratory Information Management Software

[Read More](#)

Test with Confidence™

**IDEXX**



## Home - IDEXX US

Enhancing the health and well-being of pets, people, and livestock.

[Read More](#)

## Perkins&Will

Architecture, interior design, planning, and landscape design for universities, healthcare facilities, businesses, cultural and civic institutions, sports and recreation, and more.

[Read More](#)



## Engineering, Architecture, & Geospatial Solutions | Merrick & Company

Merrick provides engineering, architecture, surveying, and geospatial solutions that fit your needs. Whether that's finding the most cost-effective alternative, using an innovative approach, or choosing the tried-and-true solution.

[Read More](#)

**INDICAL**  
BIOSCIENCE

## INDICAL BIOSCIENCE | Improving veterinary diagnostics

INDICAL is a leading provider of veterinary diagnostic workflows, innovative solutions, associated protocols, and expert technical support.

[Read More](#)



## Veterinary Medical Research & Development - VMRD

VMRD is your diagnostic partner! VMRD develops and manufactures veterinary diagnostic test kits and reagents and performs biologics testing.

[Read More](#)



## Longhorn Vaccines & Diagnostics

PrimeStore MTM is a globally trusted predicate device, invented and patented in 2007 to safely and efficiently transport RNA/DNA, even under the most challenging conditions. As the original (De Novo) MTM, it was fully optimized to inactivate pathogens and preserve RNA, mRNA & DNA for safer, more efficient, cost-effective sample testing.

[Read More](#)



## Roche | Diagnostics R&D - Tucson

Based in Tucson Arizona, the Ventana R&D centre is comprised of two temas: discovery and development.

[Read More](#)

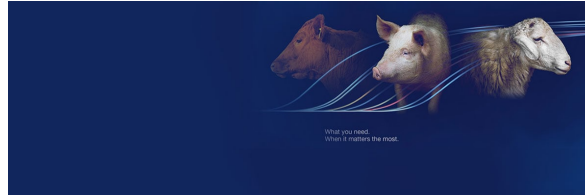
The logo for Fluxergy. The word 'Fluxergy' is written in a white, bold, sans-serif font on a dark blue background. To the right of the word is a white stylized symbol consisting of a horizontal line with a diagonal slash through it, resembling a lightning bolt or a signal.

Challenging the

## Fluxergy | Leading the Future of Testing

Fluxergy is the first open platform for multimodal, point-of-care assay development and testing.

[Read More](#)



## Animal Health Solutions | Thermo Fisher Scientific - US

Thermo Fisher Scientific is committed to the animal health industry, offering products and services designed to help you adapt and succeed in an evolving environment. Learn about how we can support new farm animal testing standards with dependable chemistry, flexible platforms, and government-licensed testing solutions.

[Read More](#)

---

Go to AAVLD Foundation Auction [More details ...](#)

**THANK YOU** for your generous support of the AAVLD Scholarship Banquet and Auction. This year, we raised \$15,350.00. These funds allow us to sponsor student/staff travel and other organizational awards. We expose many young lab scientists to exciting career opportunities at animal health diagnostic laboratories. Thank you, thank you, thank you.

***Thank you  
for your  
continued  
support!***

---

**AAVLD Foundation  
Committee**



**Foundation Donation**

---



The AAVLD Foundation is a non-profit foundation that raises funds for the advancement of veterinary diagnostic laboratory disciplines through scholarship programs, student travel support to our scientific meetings, guest lectures, seminars, professional awards, and research programs. Contributions to

**Brett Webb- Cochair**

**Cristy Mayo- Cochair**

Bruce Akey, Tim Baszler, Beate Crossley, Francois Elvinger, Pat Halbur, Donal O'Toole, Kristy Pabilonia, Jamie Retallick, Kerry Sondgeroth, David Zeman, and Ashley Hill

research programs. Contributions to the Foundation are tax-deductible 501(c)(3) and donations can be made when you renew your AAVLD membership, at the annual Foundation Banquet and Auction Event, or anytime by visiting our website. Thank you for supporting your AAVLD Foundation!

Make a donation today!



American Association of Veterinary Laboratory Diagnosticians | P O Box 6396 | Visalia, CA 93290 US

[Unsubscribe](#) | [Update Profile](#) | [Constant Contact Data Notice](#)



Try email marketing for free today!